

FTTx Solutions

Optical Splitter and xWDM Modules



Connectivity Solutions Direct (CSD) introduces its new PLC splitter module that incorporates subscriber distribution ports into the splitter module for a true “pay as grow” solution. The module features 19-in rack mount spacing and downward angled adapter ports to facilitate cable management. The adapter ports are also numbered from bottom to top so the next port is not obstructed by previous connections.

The optical devices (PLC’s or xWDM) feature low insertion loss, low polarization dependent loss, and high port uniformity. The splitter modules are available in 1xN or 2xN input configurations and output configurations of 2, 4, 8, 16, 32, and 64, providing maximum flexibility to meet the wide-ranging design requirements.

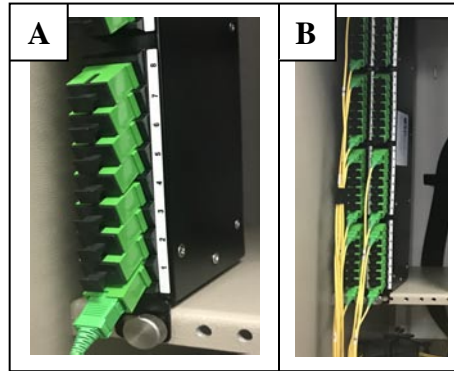
Features

- Angled adapter ports facilitate fiber management
- SC or LC style connectors
- One splitter design for all applications
- Splitter cavity accommodates xWDM’s
- Bend insensitive fiber

Applications

- FTTx Passive Optical Networks
- Centralized or Distributed split designs
- Indoor/Outdoor

Optical Splitter and xWDM Modules



A. Our unique bottom to top adapter numbering approach ensures that the next connection is clearly visible.

B. Slim profile allows for two modules in a single RU and the downward angled ports facilitate excellent management.

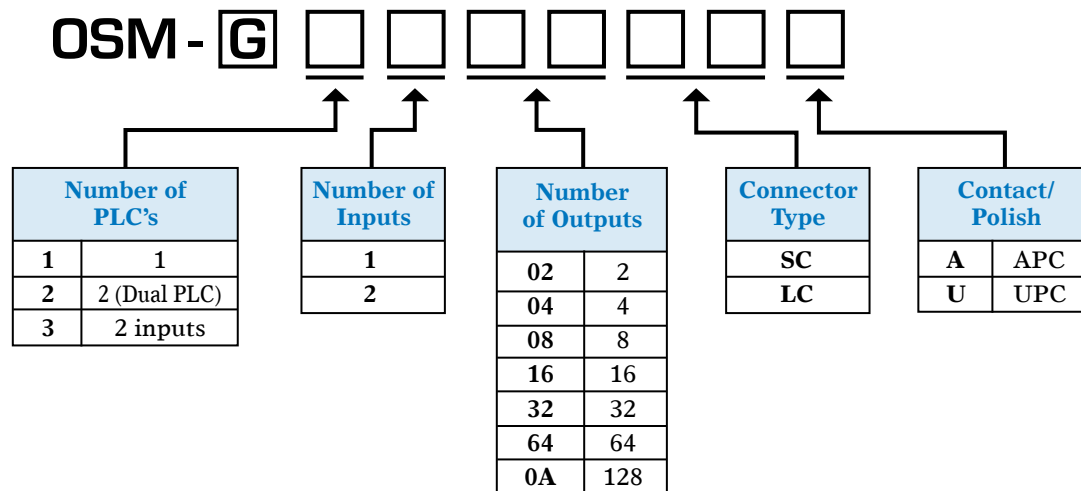
Specifications

Configuration	Typical Loss**	Max Loss**	Uniformity	Return Loss	Directivity	PDL
1x4	6.8 dB	7.3 dB	≤0.5 dB	≥55 dB	≥55 dB	0.2dB
1x8	9.8 dB	10.3 dB	≤1.0 dB	≥55 dB	≥55 dB	0.2dB
1x16	13.2 dB	13.5 dB	≤1.3 dB	≥55 dB	≥55 dB	0.3dB
1x32	16.5 dB	16.7 dB	≤1.5 dB	≥55 dB	≥55 dB	0.3dB
1x64	19.7 dB	20.4 dB	≤1.9 dB	≥55 dB	≥55 dB	0.3dB

* Does not include connector loss

**For wavelength range 1600-1650nm, add IL 0.5dB for 1x4, 1x8, 1x16 and 1.0dB for 1x32 Splitter

Ordering Information



Need more help? | Get answers from our experts at **877-248-1286** for more information or visit our web site www.csd-network.com